



Leigh
Stationers'
Primary Academy

**Curriculum Meeting
Monday 9th September 2024**

Year 4

Staff



Leigh
Stationers'
Primary Academy

- Miss Deadman
- Mrs Chapman - Wednesday AM
- Mrs Behic





What children need

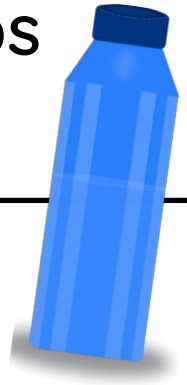


Children need PE kit on Monday/Tuesday and Thursday

- If correct PE kit is not in school for lessons children will have to borrow school kit

Children can bring water bottles, classroom cups are also provided.

Note: timetables are subject to change



Uniform



Leigh
Stationers'
Primary Academy

- Hair accessories – must be blue, black, white or yellow (school colours no larger than 8cms)
- Shoes – no trainers or UGG boots
- PE – embroidered from Casey's school shop
- School bag – from Casey's school shop
- Earrings – small studs, easy to remove for PE. If they cannot be removed, please provide your child with tape.

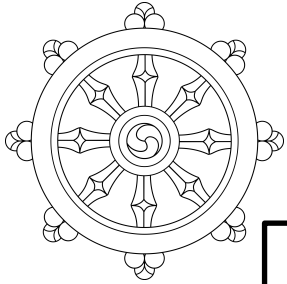


Year 4 learning

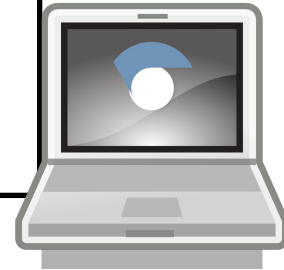
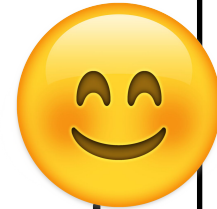
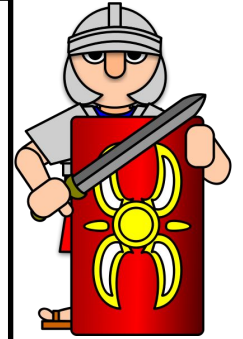
Autumn term



Leigh
Stationers'
Primary Academy



- ★ Science: Solids, Liquids and Gas
- ★ PYP - History: Romans
- ★ RE: Buddhism
- ★ PSHE - Connections and emotions
- ★ PE - Football and Netball
- ★ Computing - Online Safety and Computer Networks



Overview of learning across Year 4:



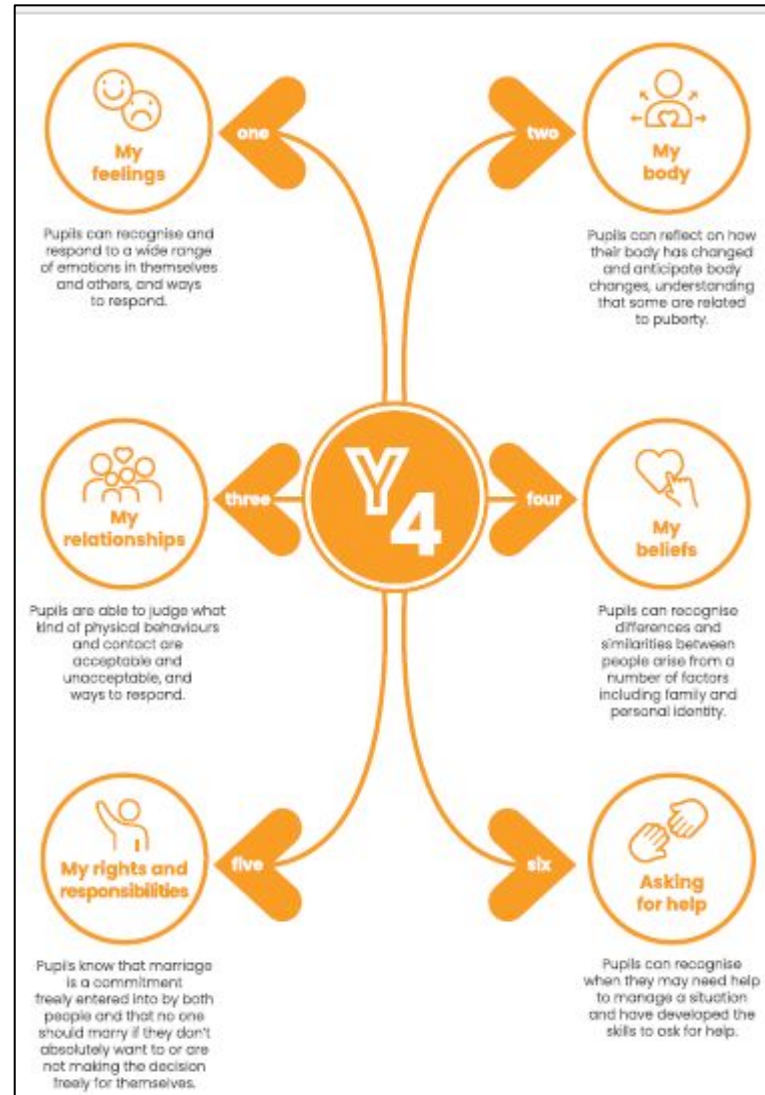
Our main topics:

- Autumn 1: The Romans
- Autumn 2: The Human Body
- Spring 1: The Anglo-Saxons
- Spring 2: Rivers
- Summer 1: The Vikings
- Summer 2: Tourism and the UK

Curriculum for Life

Overview:

Periods - new 2022



How can you help at home?





Home learning



Leigh
Stationers'
Primary Academy

Year 4

- Reading at least 3 times a week, recorded in their reading record. Reading records must be in school everyday but will be checked every **Monday**.
- Maths - They will be given a Maths Champion target this will be assessed during the last week of the half term. In Year 4, children may be assessed more frequently - they just need to ask.



Home learning

Reading - Reading for Pleasure

- We expect your child to read regularly at home, at least 15 minutes 3 times a week. Children need to complete their reading journal at least three times a week to say they have read.
- We also encourage you to share a book with your child and talk about the story / characters.
- Reading Journals will be checked on a Monday.



Home Learning



Leigh
Stationers'
Primary Academy

Maths Champion

Your child's personal Maths Champion target will be sent home at the beginning of each half-term. Please practise these frequently. Children will get time to practise their target in school as well. Children will be assessed on their target at the end of the half-term and will receive a sticker and a new target when the previous target has been achieved.

Google Classroom



- Every child has a login for Google Classroom. This can be found in the front of their reading journal.
- Children's Maths Champion targets will be updated on Google Classroom.
- Reminders and photos will be posted on Google Classroom.



Maths Champion Google Classroom - for help with targets



- All Year 4 children will join this classroom in school this week.
- You will see help with all targets on here including worksheets, games and advice.



Times Table Practise

TT Rockstars



Leigh
Stationers'
Primary Academy

Children to practise their Maths Champion targets on TT Rockstars at least 3 times a week - this will be checked on a Monday.

- To practise their current target, use 'Garage'
- To revise / practise all times tables to 12x table use 'Soundcheck' .



Year 4 Multiplication Check

- A statutory test for all children in Year 4 in England.
- 25 random times table questions from the 2x table to the 12x table
- To practise for the check use 'Soundcheck' on TT Rockstars - this will be exactly how the real check is
- Even if your child knows all their times tables they need to go back and practise.
- Children need to practise 3 times a week, this is checked on a Monday.

English tasks in school



Leigh
Stationers'
Primary Academy

Spellings

Your child spellings will be taught and practised in school weekly.

Reading tasks

Children will be set reading tasks on Google classroom that will be completed in school as part of Early Morning Work. These do not need to be completed at home.



Contacting Miss Deadman

- If you have any questions or concerns, all communication must come via the school office either by email or phone and not direct on Google Classroom or email.
info@stationersprimary.latrust.org.uk

All communications will then be passed onto myself and dealt with accordingly.